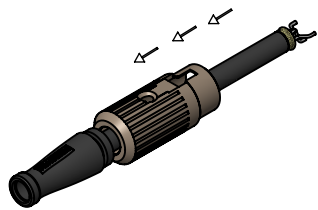
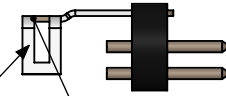


**STEP 1**

FIRST SLIDE BOOT AND HOUSING ONTO THE CABLE.

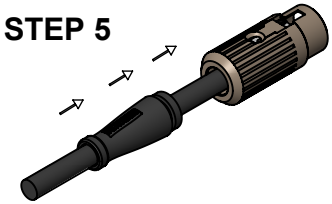


IF NO DRAIN WIRE. FOLD OUTER CABLE SHIELD BACK & CLAMP TO METAL PIN INSERT. OR USE HALF OF THE SHIELD TIGHTLY TWISTED TO FORM A DRAIN WIRE & SOLDER TO THE SMALL HOLE IN THE PIN INSERT.



METAL PART OF THE PIN INSERT

**STEP 5**



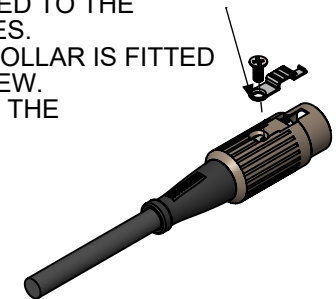
DETAIL A  
SCALE 2 : 1



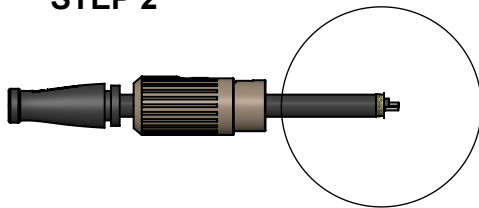
STRIP BACK OUTER COATING 7.0mm  
STRIP BACK INNER COATING 2.0mm  
EXPOSING COPPER CORE

**STEP 6**

CLIP IS ONLY FITTED TO THE 590 AND 591 SERIES.  
FOR 592 SERIES COLLAR IS FITTED BEFORE THE SCREW.  
ALL OTHERS JUST THE SCREW IS FITTED.

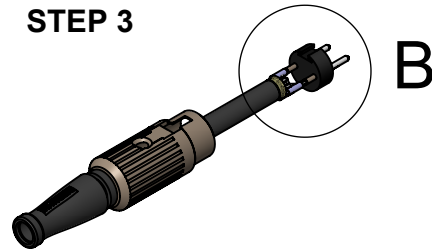


**STEP 2**

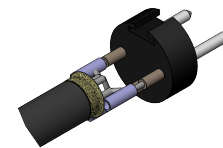


A

**STEP 3**



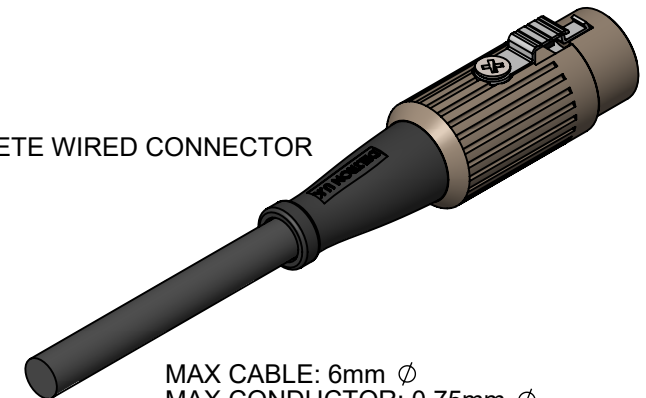
B



DETAIL B  
SCALE 1 : 1

SLIDE PROTECTIVE SLEEVE OVER EXPOSED WIRES BEFORE SOLDERING IF REQUIRED (SLEEVE NOT SUPPLIED) THEN SOLDER THE WIRES TO THE PINS AS SHOWN SLIDE HOUSING AND BOOT INTO PLACE SO PINS ARE IN THE CORRECT POSITION. WITH BOTH HOLES PARALLEL EACH OTHER.

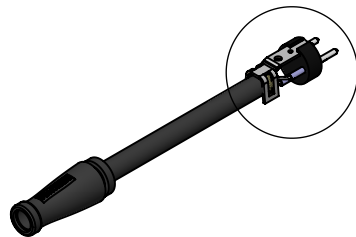
COMPLETE WIRED CONNECTOR



MAX CABLE: 6mm  $\phi$   
MAX CONDUCTOR: 0.75mm  $\phi$   
PIN SOLDER BUCKET 1mm  $\phi$  +0.1 / -0.0

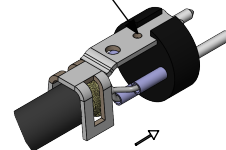
REFER TO CONNECTOR SPECIFICATION FOR WIRING TERMINATIONS.

**STEP 4**



HOLE FOR DRAIN WIRE

C



DETAIL C  
SCALE 1 : 1

SLIDE PROTECTIVE SLEEVE OVER SOLDERED CONNECTION AND FIT BRACKET AS SHOWN.